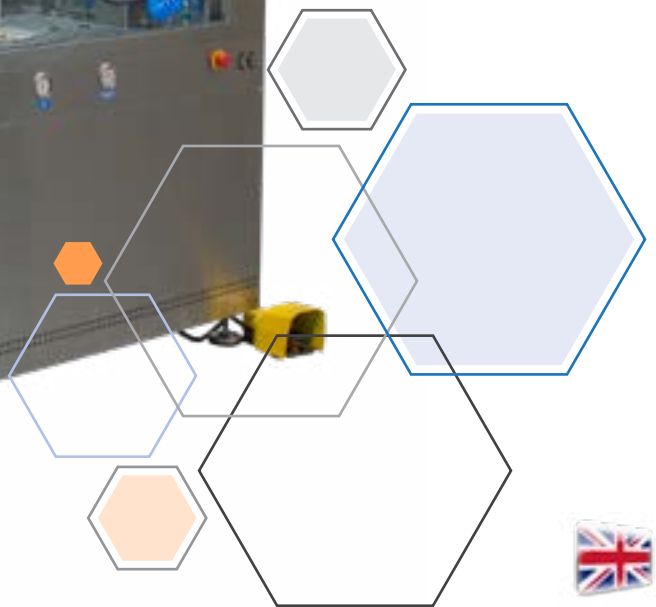




**FILTER WASHING MACHINE**

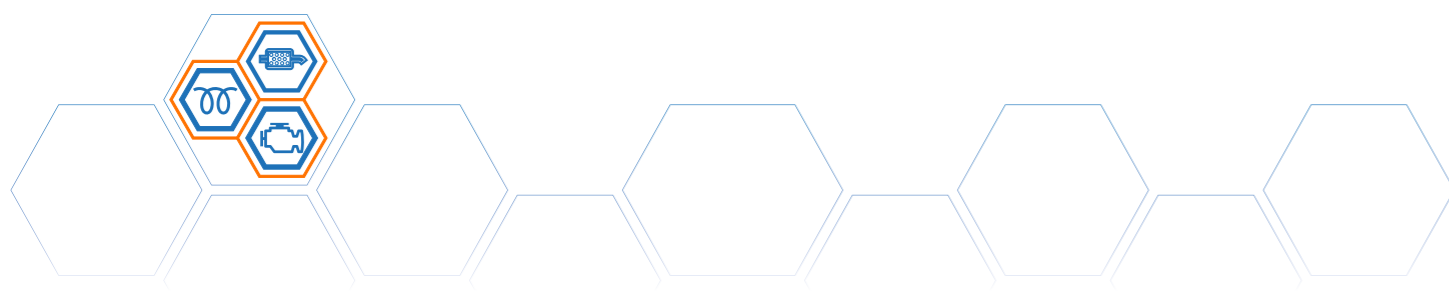
**DPF REVIVAL**

**CTW2000**



[www.dpf-revival.com](http://www.dpf-revival.com)

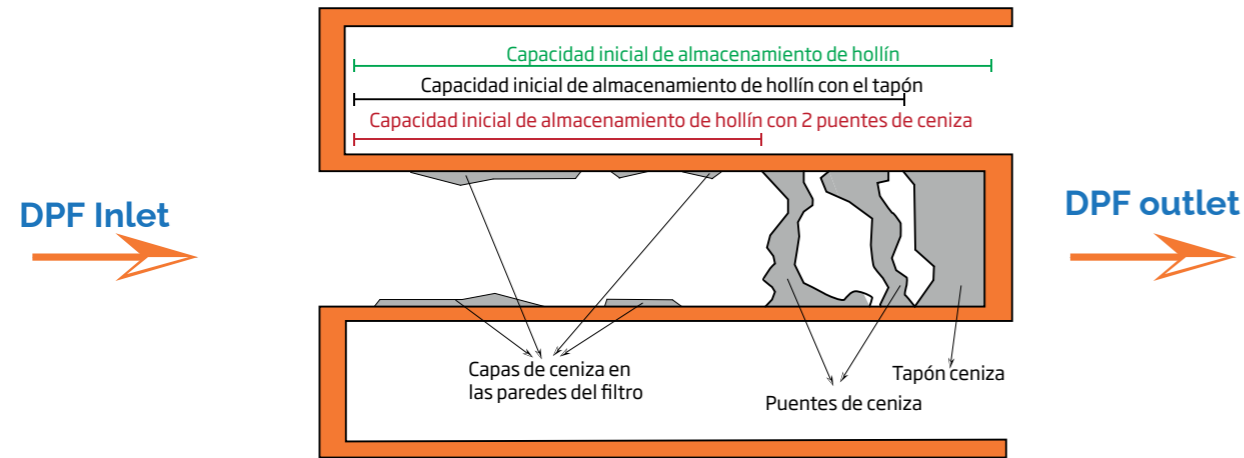




### Main problem: accumulation of ash and soot.

Although it is commonly referred to as soot, the particulate filter is affected by two different materials that accumulate inside it. We are talking about ash and soot.

Soot is normally removed by regenerations which burn the soot but are not able to remove the ash.



### Costs arising from particulate filter and catalytic converter problems

#### Direct costs

- Towing due to particulate filter failure.
- Particulate filter replacement.
- Loss of time for repairs.
- Penalties for pollutant emissions.

#### Indirect costs

- Loss of engine performance.
- Risk of damage to other systems.
- Increased fuel consumption.

### Filters with different damages

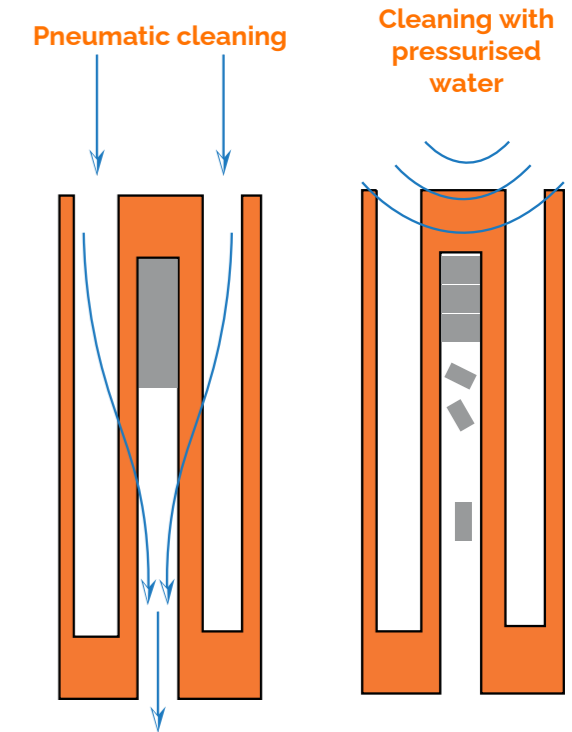


### Cleaning operation

There are cleaning procedures using **pneumatic systems** that, due to fluid dynamics, the air tends to find the best path with the least resistance and is often unable to remove the ash plugs that may have formed.

**Pressurised Water Cleaning** emits constant waves into the region where the ash plug has formed and succeeds in breaking it up and transporting it out of the particulate filter.

With the help of a specific soap, the temperature of the cleaning solution, controlled water pressure, and the help of pressurised air pulses, an effective cleaning of any particulate filter is achieved.



# DPF REVIVAL

FOR ANY  
PARTICULATE  
FILTER





# DPF REVIVAL CTW 2000

DPF REVIVAL CTW2000

99% efficiency in DPF and CAT recovery.

Total removal of ash, oil and soot.

Rapid return on investment.

New innovative service that generates new customers and opens a new line of business.

Universal washer for particulate filters in passenger cars, light commercial vehicles and commercial vehicles.

Customisable programmes for filter washing.

Selector for particulate filter (DPF) or catalytic converter (CAT).

Multiple languages.

Configurable ticket.

Remote connection 4.0.

The DPF Revival CTW 2000 is ideal for garages, commercial vehicle workshops, component cleaning and rebuilding specialists, truck fleets and commercial vehicle fleets.

Particulate filter maintenance is essential to prevent breakdowns and damage that can lead to vehicle downtime and high repair costs.

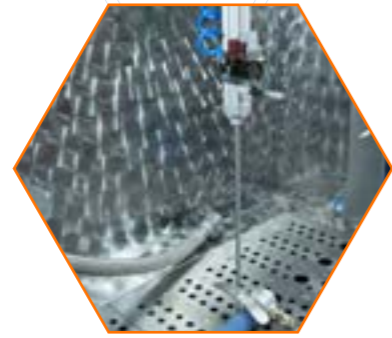
A good maintenance respecting the service times and planning the cleanings is the only way to a long life of the filters and a saving in costs.





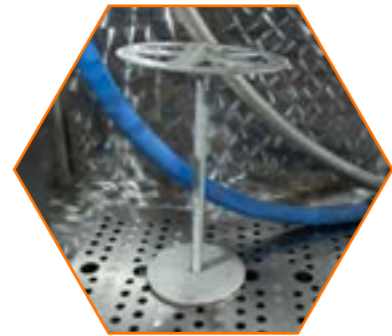
### Locking piston

Movable piston to hold the particle filter in place and prevent it from moving during washing. It is also useful for directing the outflow of water where it does not disturb.



### Filter platform

Platform for fitting removable cartridge type truck filters (Euro 6). Thanks to the perforated grid this platform can be placed in different positions and is height adjustable to cover all filter sizes.



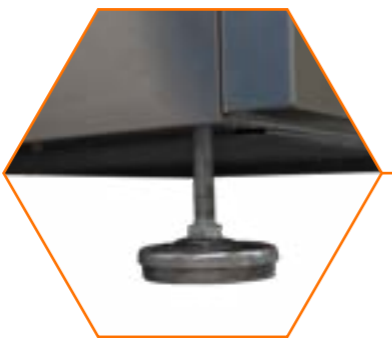
### Air pressure regulator

The pressure regulator allows us to have more control over the washing process, allowing us to modify the pressure of the air impulses, for example starting with a lower pressure and increasing as the condition of the filter improves.



### Adjustable feet

The DPF Revival stands on 4 height adjustable feet. These feet help us to level the machine and allow us to adjust the height slightly.



### Blow gun

Blowing gun located on the right side of the machine, accessible with the door open or by means of the gloves for blowing or cooling the filters.



### Washing gun

Manual washing gun activated by means of the foot pedal located at the bottom, allows the gloves to be used to clean the outside of the filters or any other part that needs to be cleaned.



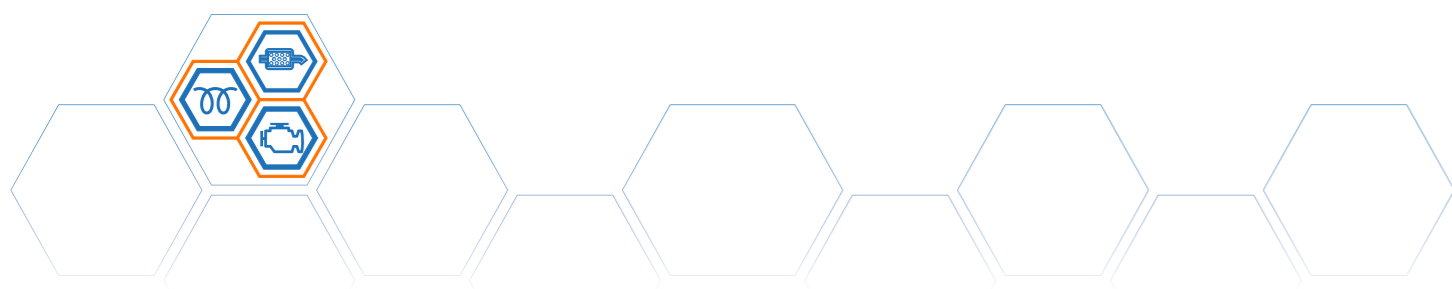
### Filtering system

Double filtering system to wash the filters with particle-free water. The upper pressure gauge indicates the saturation level of the filters. Both have a lower tap for filter discharge. Stainless steel inner cartridges so that they can be cleaned and reused without the need for replacements.



### Pump pedal

Foot pedal to control the hand wash pump.



### Control panel

Simple and intuitive, it allows you to control all the main operations on the same screen.

- Cleaning temperature setting.
- Filter status test.
- Selection of the cleaning programme. (CAT, DPF or customised)
- Drying temperature setting and drying activation.
- Activation and deactivation of heating elements, steam extractor, interior lighting.
- Opening and closing of the door and raising and lowering of the truck platform.



### New platform for locking commercial vehicle filters

The new platform for blocking truck filters offers several added advantages to the washer.

When not in use, it leaves much more usable space free for washing passenger car or van filters that have a very long tube.

It makes it easier to fit two filters when you need to wash and dry at the same time.

Allows the truck filter to be placed on the entire grill of the machine, thus facilitating other uses at the same time.

Having two pistons for locking makes a better sealing of the filter improving the cleaning.



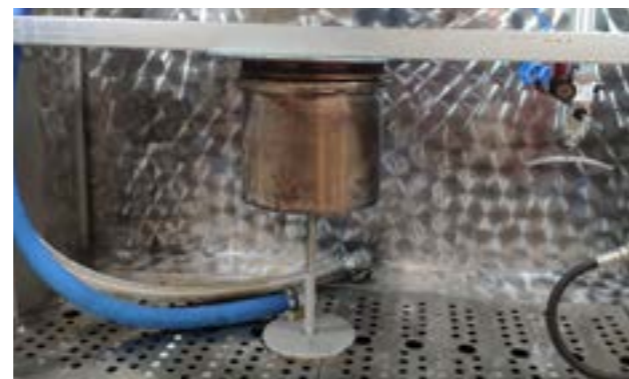
### Adapters for filter connection

The machine is equipped as standard with several adapters that allow the connection of 90% of the filters and catalytic converters of both passenger cars and commercial vehicles.



### For all filters and catalytic converters

Valid for all particulate filters and catalytic converters in passenger cars, light commercial vehicles and commercial vehicles. (including Euro 5 and Euro 6).



Car and van



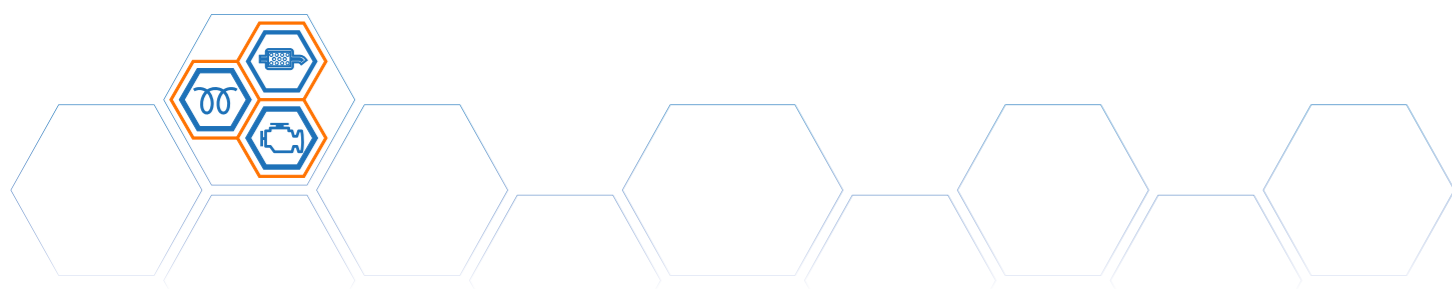
Euro 5



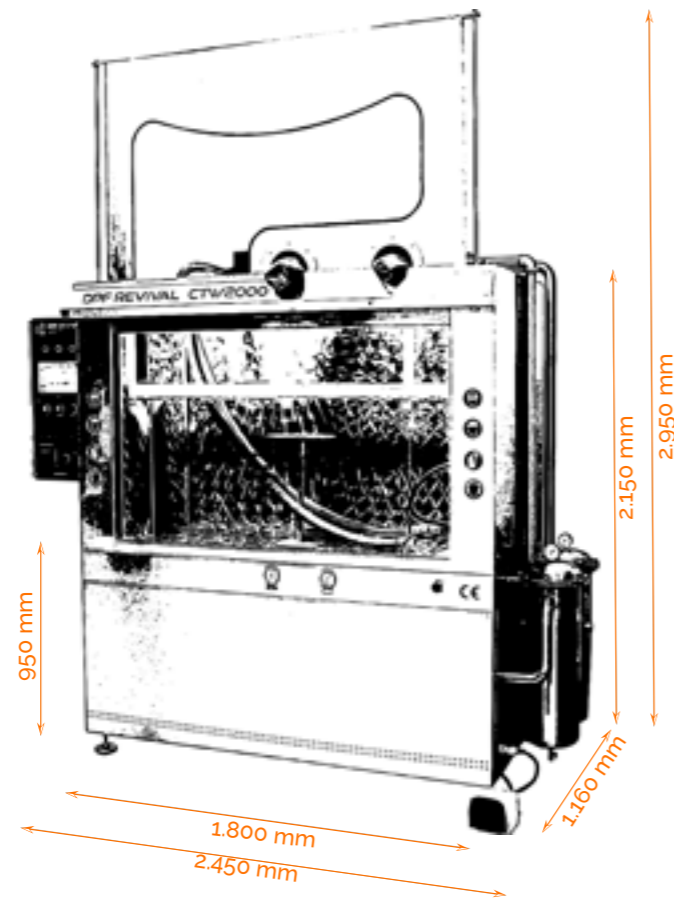
Euro 6



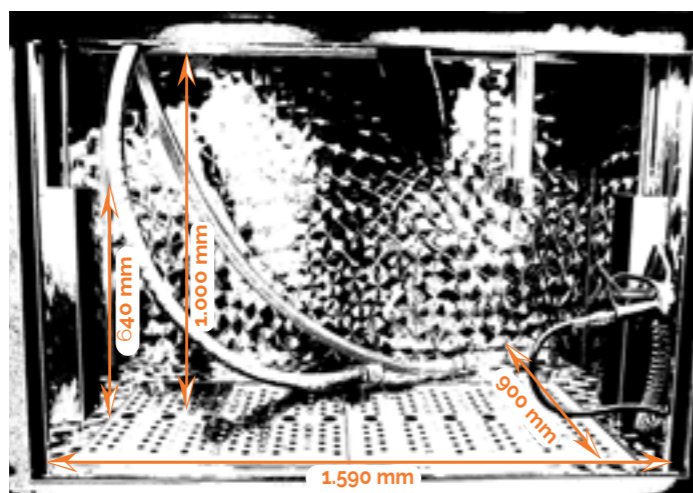




## External measurements



## Internal measurements



## Connections

CONNECTIONS	
Air inlet	Quick stuffing - Male 1/4"
Water inlet	1/2" male
Input Power supply	5 Poles (3PH +T +N) 6mm <sup>2</sup>
Tank water outlet	1" 1/2 female
Water outlet filters	1/2" male

## Datos técnicos

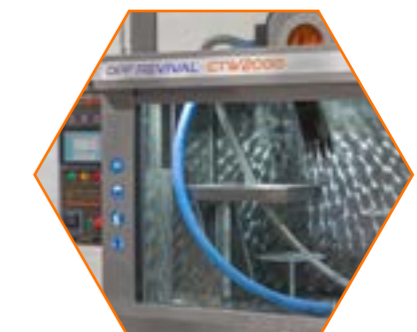
TECHNICAL DATA	
Washing capacity	1800 x 900 x 1000
Load capacity	250 Kg
Tank capacity	250 litros
Power supply	400V - 3 PH - 50 Hz
Interior light	2x led IP 67
Total consumption	28.5 Kw
Air consumption	100 litres - 6 bar
Drying system	INCLUDED
Drying system consumption	7.5 Kw
Resistance heating	7.5 Kw + 7.5 Kw
Vapour extractor	0.75 Kw
Washing pump	2.25 Kw
Manual pump	1.5 Kw
Air blower	1.5 Kw
Touch screen	10"
Weight	700 Kg
Material	Aisi 304 stainless steel for parts in contact with water

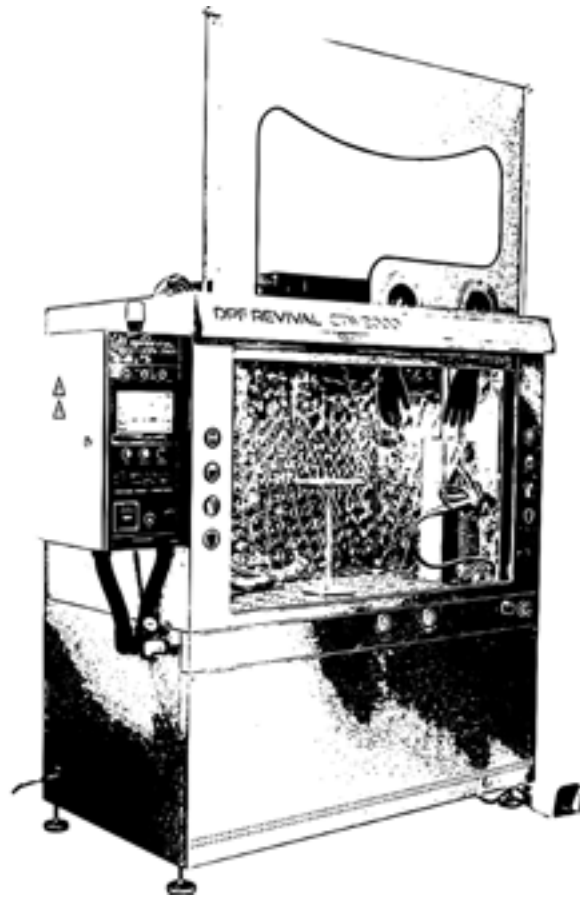
## Optional

### Inflatable connectors



### Lateral fixing platform





## DPF REVIVAL

Pol. Ind. Villayuda  
C/ la Demanda S/N  
Naves Azucarera, Nave C1  
09007 - Burgos  
ESPAÑA

Tel: +34 947 215 125

[www.dpf-revival.com](http://www.dpf-revival.com)

Email: [info@dpf-revival.com](mailto:info@dpf-revival.com)

